

# BRUTALIST

# GLAMOUR

*The smooth patina found in poured concrete gives this home a delicately industrial edge*

Words **EMMA LOVE**  
Photography **LUKE WHITE**  
Styling **SARA MATHERS**



**Dining area** A specially commissioned industrial glass table on casters is paired with mismatched seating, including an aluminium and velvet chair by Mark Brazier-Jones and the 'Costes' design by Philippe Starck for Driade. To one side, a blackened steel wall is the backdrop for glass shelves that display the owner's objects **Stockist details on p195** ▶





**TUCKED AWAY BEHIND A ROW OF VICTORIAN TERRACED HOUSES IN LAMBETH, SOUTH LONDON,**

this former industrial unit has been transformed into a ground floor studio office to let and a lateral first floor, five-bedroomed family home. 'It's an unusual site in that the gardens of the neighbouring Victorian houses back onto it on all four sides,' says Andrew House, an associate at Carmody Groarke, the British architectural practice that undertook the renovation.

From the outset, the property's owner was keen on using exposed concrete for the interior, and wanted to create a warehouse-loft feel with an open-plan living space. 'Poured concrete is quite sculptural – as a material, it has traditionally been used in construction, but in recent years, it has been appreciated much more for the qualities of its finish,' explains Andrew.

Bringing in additional industrial-style materials that complement the concrete – such as a wall lined top-to-bottom with oak doors in the hallway, a blackened steel shelf unit by the dining table and a double vanity unit made from finely veined Carrara marble in the main bedroom's ensuite – prevents the home from looking too stark.

'Each room has a glass door that faces a small, intimate courtyard, which allows lots of light to pour into the house,' says Andrew. 'The glass doors in the living space slide right back into the pocket of the wall so that the room opens up completely, creating an uninterrupted view of the garden, which sits on the roof of the studio office.'

In other spaces – such as the kitchen, hallway and swimming pool – skylights draw daylight downwards from the roof. Together with the minimal furniture, these clever details ensure that the considered palette of materials takes centre stage. [carmodygroarke.com](http://carmodygroarke.com) ▶

**Exterior** A small, purpose-built courtyard surrounds the property, while the living area opens up onto a raised garden **Hallway** A wall of oak doors adds warmth to the concrete interior

GREENERY BY CALLUNA FLOWERS







**THE  
PROPERTY'S  
OWNER  
WANTED TO  
CREATE A  
WAREHOUSE-  
LOFT FEEL  
WITH AN  
OPEN-PLAN  
LIVING SPACE**

**Living room** The 'Extrasoft' modular sofa by Piero Lissoni for Living Divani, positioned in front of the fireplace, is the focal point of this contemporary space **Stockist details on p195** ▶



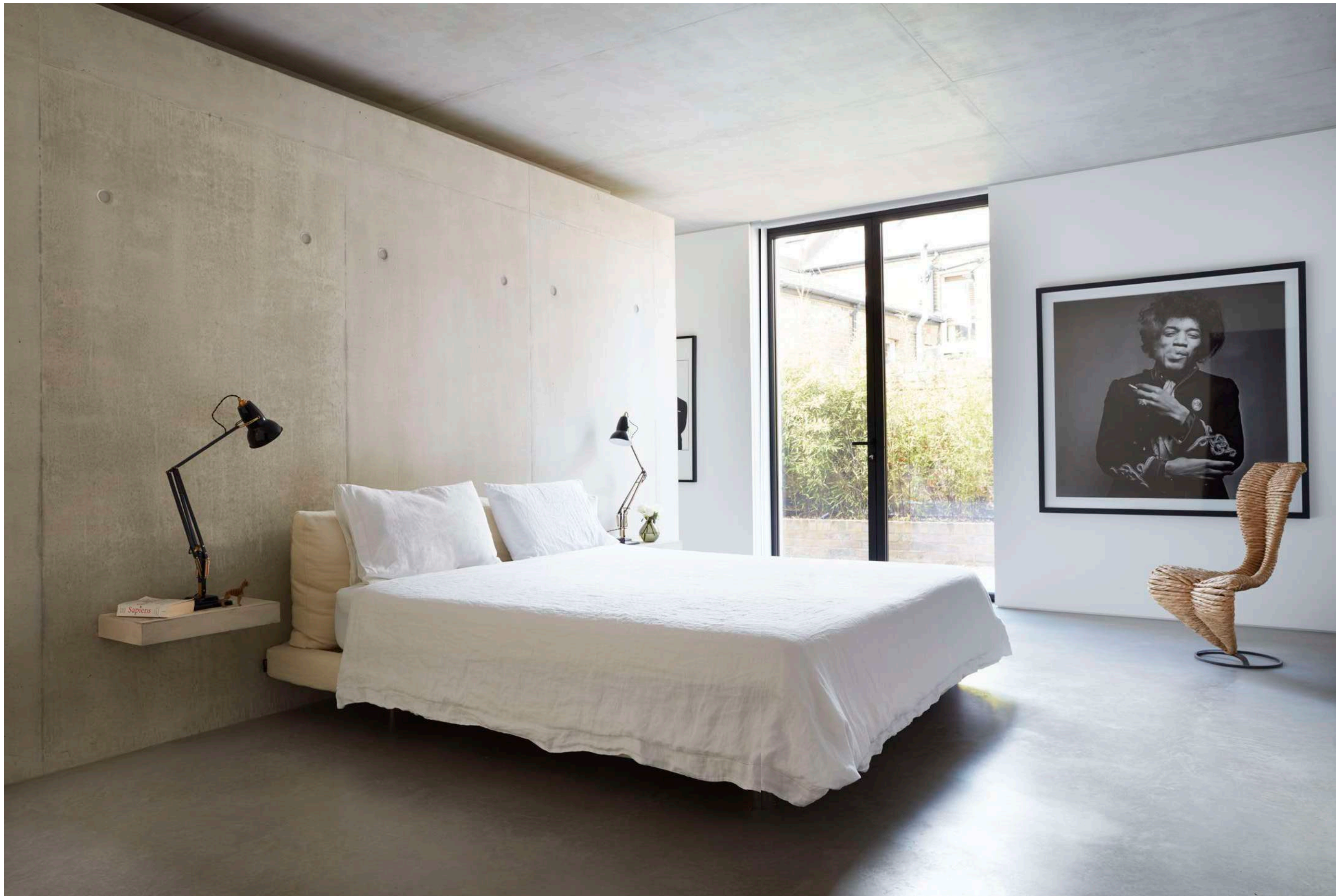


**TOUCHES  
OF MARBLE  
AND WOOD  
PREVENT THE  
CONCRETE  
INTERIOR  
FROM  
LOOKING  
TOO STARK**

**Ensuite bathroom** Made from white Carrara marble, the double vanity unit features discreet storage cabinets, framed by a warm, glowing LED light ▶







**'EACH ROOM HAS A GLASS DOOR THAT LEADS TO THE SMALL COURTYARD, ALLOWING LIGHT TO POUR INTO THIS HOME'**

**Bedroom** A large black and white print of a photograph of Jimi Hendrix by Gered Mankowitz, the 'S-Chair' by Tom Dixon for Cappellini and Anglepoise bedside lamps add personality to this otherwise minimal space **Stockist details on p195** **ED**